

ROUTING PROCEDURE FOR HIPSHOT 4 STRING BASS TREMOLO

PLEASE NOTE: ROUTE FIXTURES ARE DESIGNED FOR A
ZERO OFFSET ROUTER BIT

CAUTION: THIS INSTALLATION SHOULD ONLY BE ATTEMPTED
BY QUALIFIED INSTRUMENT TECHNICIANS. SERIOUS DAMAGE
CAN RESULT

. TO THE INSTRUMENT FROM IMPROPER INSTALLATION!!!

(Hipshot does not assume any responsibility for damages incurred by improper installation.)

1. Before removing your original bridge, mark the center line of the instrument and intonation point of the saddle that is furthest forward (towards the neck) and furthest back (away from the neck) ([see fig. 1](#)).
2. Accurately position the center line of the Top Route Fixture to the center line of the instrument. Also position the Top Route Fixture so that the intonation point marks of your original bridge lie within the forward intonation point and back intonation point lines marked on the Top Route Fixture. This will insure that you will have enough saddle movement distance to properly intonate your instrument once your tremolo bridge is installed ([see fig. 2](#)).
3. Mark and drill the two 1/2" diameter x 3/4" deep holes for the push in threaded pivot posts inserts.

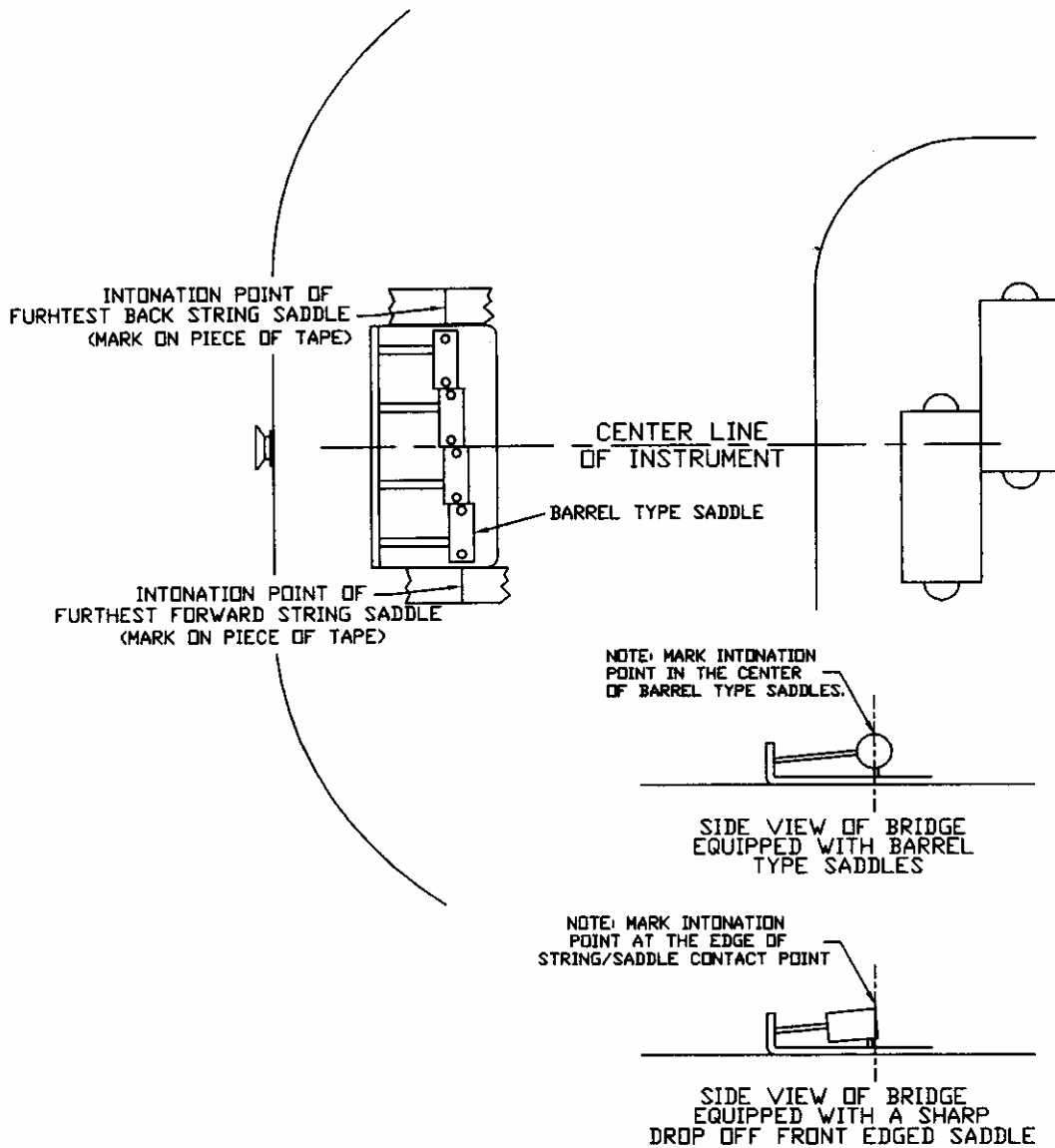
4. Route the top cavity entirely through the instrument.

5. Working from the backside of your instrument, line up the Back Route_Fixture with the through route cavity you have just made. The spring cavity section should extend towards the neck. Route the spring cavity 11/16" deep ([see fig. 3](#)).

BASS TREMOLO INSTRUCTIONS

FIG 1

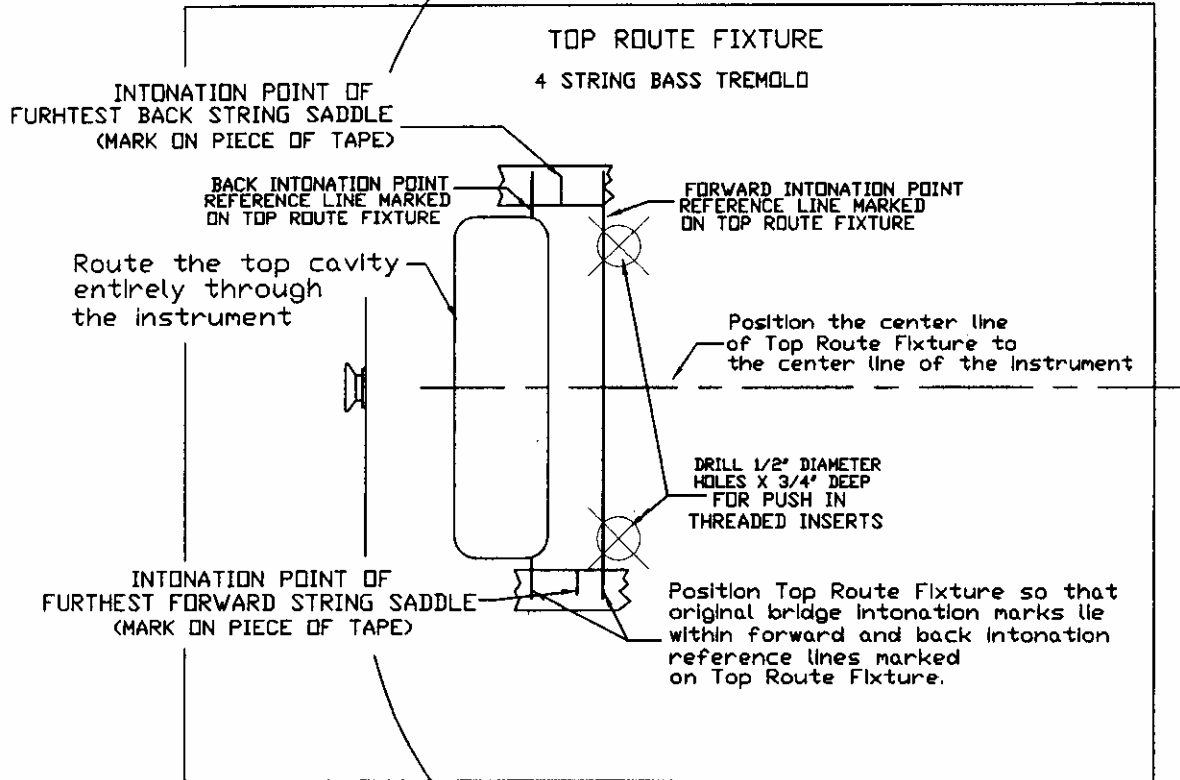
FRONT SIDE OF INSTRUMENT



BASS TREMOLO INSTRUCTIONS

FIG 2

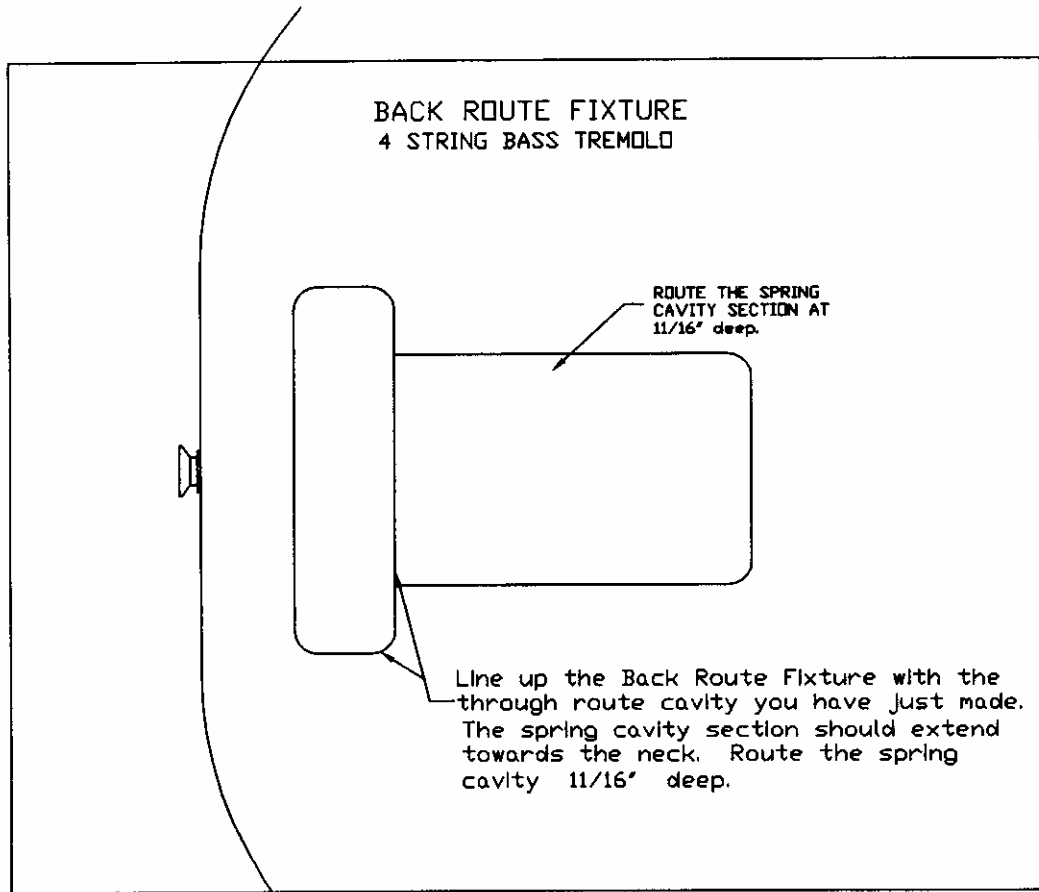
FRONT SIDE OF INSTRUMENT



BASS TREMOLO INSTRUCTIONS

FIG 3

BACK SIDE OF INSTRUMENT

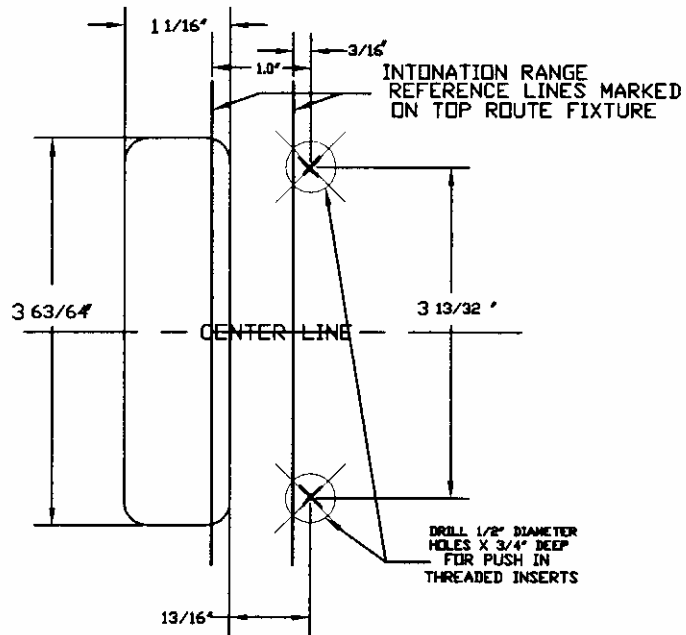


ROUTE FIXTURE DIMENSIONS

TOP ROUTE FIXTURE

4 STRING BASS TREMOLO

PLEASE NOTE: ROUTE FIXTURES ARE DESIGNED FOR A ZERO OFFSET ROUTER BIT



BACK ROUTE FIXTURE

4 STRING BASS TREMOLO

